

An improvement of Energy Efficient Multipath Routing Node Management Techniques for MANET

R.Rajeshkanna¹ DrA.Saradha²

¹Research Scholar, Bharathiar University, Coimbatore.

Assistant Professor, Dept.of Computer Applications,

Dr.N.G.P. Arts and Science College, Coimbatore, Tamilnadu, India

² Head, Department of Computer Science and Engineering, Institute of Road and Transport Technology,
Erode, Tamilnadu, India

Abstract

A mobile ad hoc network (MANET) is a continuously self-configuring, infrastructure-less network of mobile devices connected wirelessly. Each device in a MANET is free to move independently in any direction, and will therefore change its links to other devices frequently. In such networks, the mobile nodes may dynamically enter the network as well as leave the network. Due to the restricted transmission range of wireless network devices, multiple hops are usually needed for a node to exchange information with any other node in the network. A joint routing and energy allocation plan is developed which stabilizes the system and provides surrounded average delay guarantees whenever the input rates are within this capacity segment. This paper considers jointly optimal design of cross layer congestion control, routing overhead and Throughput for Mobile ad hoc networks.

Keywords : Congestion Control, Multipath Routing, Mobile Adhoc Networks, Bandwidth Availability

I.INTRODUCTION

The fundamental idea of cross layer method is maintaining the functionality of the unique layers, but communication, synchronization among diverse layers can be allowed, because of this simplicity among the layers can be maintained, and number of control signals can be concentrated[1].

The demanding of designing network protocols for MANET comes from link break which caused network performance degradation. The route rebuilding of link takes major challenge of routing protocols task can be lost making QoS (Quality of Service) of connections depending on the state of networks. A number of MANET routing protocol becomes efficient and correct. There are three types of routing in MANETs flat routing versus non-flat or hierarchical routing which benefits of proactive (e.g. DSDV,OLSR), reactive(e.g. AODV,DSR), and hybrid(e.g. ZRP,TORA) mechanism for routing[2].

Routing is a necessary feature in wireless networks; in such networks, a node should have the ability to deal with data transmission as required between source nodes and a sink in different situations. These capabilities may cause consumption of extra energy. Hence, efficient MAC and routing protocols need to be designed to enhance the lifetime of the network, and these protocols require efficient algorithms to deal with different situations.

In most cases researches did not go over complex cross layer design completion but try to propose a cross layer design to be able to solve the problem at the present. In most of the proposals only two or perhaps three layers need to share information, and therefore had extensive the original strict layered structure to present a result to the problem with performance development. Cross layer design started a gain lot of concentration from the researches with its performance development and the need for cross layer interaction for different applications and the mobile ad hoc behavior. Though different cross layer design had provided a means for protocols to interact with the protocols of other layers, there may be some interaction that may be estimated by the designer which if occur would create some loops. These kinds of loops caused due to unintentional interactions could compromise the stability of the entire system[3]. Figure 1 shows the various applications using the manet and their topology structure are defined in this diagram.

Figure 1: Mobile Adhoc Network



The layering design of the standard protocol stacks has achieved great success in wired networks. It separates abstraction from implementation and is thus consistent with sound software engineering principles information hiding and end-to-end principle. Though, protocol stack implementations based on layering do not function efficiently in mobile wireless environments. This results from the highly variable nature of wireless links and the resource limitation nature of mobile nodes[4]. As a solution, there has recently been a proliferation in the use of cross layer design techniques in wireless networks.

Ad hoc On-demand Multipath Distance Vector which is an extension of Ad hoc On-demand Distance Vector and it's also establish the multiple loop-free and link-disjoint paths A starting place node floods a Route Request to the entire network in order to find routes to the destination and when the destination node receives the Route Request via different neighbors, it transmits multiple Route Reply packets to the source node. Lee proposed a multiple routing protocol considering the residual battery capacity of route candidate nodes based on AOMDV[5].

The source and destination IP addresses are constant for the lifetime of the network, source sequence number is increasing indicator of packet "freshness," destination sequence number is the last known sequence number for destination node at source node and hop-count is initialized to zero and incremented at each intermediate node which processes the RREQ. Destination sequence numbers to ensure loop freedom at all times, avoiding problems associated with classical distance vector protocols[6].

The predictable Positioning Distance is used to locate the quality of link between neighbor nodes. It is used to reduce the failure of the path and discover the routes again and again. AODV, AOMDV, EADB-AOMDV are on-demand routing protocol which are based on topology[7].

Wireless sensor networks have gained worldwide attention, academically as well as industrially, because of its great potential for many applications in various scenarios such as military target tracking and surveillance, natural disaster relief, biomedical health monitoring, hazardous environment exploration, and seismic sensing [8].

There are many works seen to make progress the network life span by maximizing power competent protocols and most of them have incorporated conventional layer approach. There are many mechanism are available for dropping power utilization such as period listening and sleeping, collision and overhearing avoidance and message passing etc[9,10]. There are several routine and usefulness of the system drawback are exists in case of conventional layered network having layer independency. The competent cross layer plan method was adapted in different wireless networks. In this approach inter layers communication is achieved and also important information among the layers is exchanged to

optimize the desired goal in wireless communication system. Many articles discuss and emphasize the improvement of cross layer based techniques [11,12,13].

The traffic at each mobile node is transmission among different path instead of single path. This has been accepted out at routing layer allows major energy protection. At MAC layer retry limit is powerfully adjusted over each wireless links to achieve energy protection there by increasing the network lifetime. There are papers which talks about high throughput and minimum delay in wireless networks [14,15].

The blend of MANET with multicasting introduces new challenges towards secure data transmission. The secret keys are also known as Traffic Encryption Key (TEK) used to encrypt and decrypt data by sender and receiver respectively. For achieving maximum security Key management techniques are used . This technique takes the liability of creation, distribution and updates the secret keys when the membership changes. If the entire network is considered as single network, when the node join or leave new secret key must be evaluated and distributed to entire network[18].

II. PROBLEM DEFINITION

In mobile ad-hoc network all the node are move from one place to another place very frequently. The major challenges in ad-hoc networks are power control, scheduling and routing. These are related to different layers in the wireless protocol stack. Several protocols have been designed independently without considering the interactions between these layers.

Most of the energy related study in MANET has been done at routing layer to reduce energy consumption in either transmission or suggesting a different routing approach. This paper proposed the new routing techniques for betterment of energy management techniques. So the link break between senders to receiver is very frequent. Source node is not able to predict either data can be send by the source is delivered to the destination or not because of uncertainty of link between sources to destination. The End to end delay between the source and destination also discussed to improve for route stability.

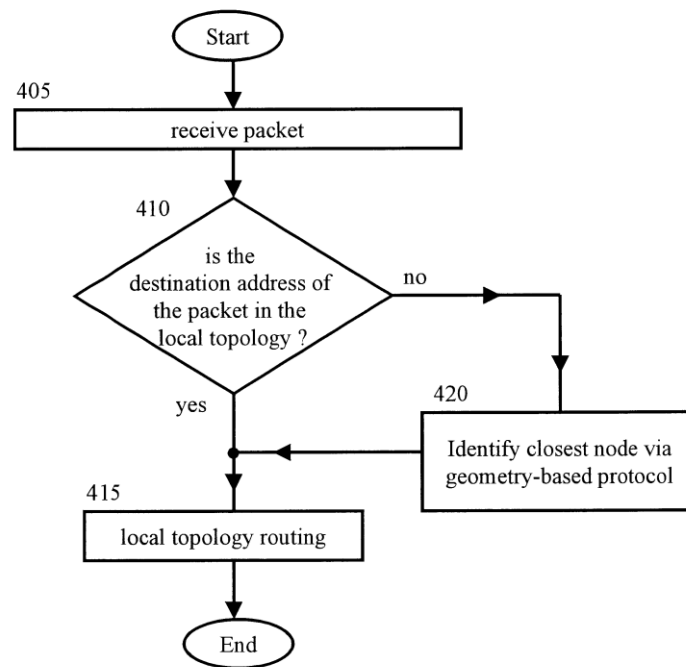
III. Cross Layer Interaction

Cross layering came into maintenance because of particularly variable nature of links used in the wireless communication systems and due to resource reduced nature of the wireless mobile devices there has been multiple research studies to develop the performance of the protocol stack by allowing cross layer interaction by wireless systems. Because of QoS, energy utilization, poor performance, wireless links, mobility, packet loss, end to delay problems observed in the wireless networks much attention is paid in the cross layer interactions. Normally, wireless sensor nodes avoid straight communication with distance end since maximum broadcast power is required to achieve reliable transmission. Instead in wireless sensor networks, sensor nodes communicate by forming a multi hop network to forward messages to the collector nodes, which is also called the sink node. In situation to energy efficient routing in multi hop becomes critical in achieving energy efficient network. In addition to using multi hop communication for reducing the power condition for communication, an efficient routing protocol is needed to decrease the end - to - end energy consumption when data send to sink node.

Major sources for power consumption are idle listening, re-transmission resulting from collision, control packet overhead, unnecessarily high transmitting power, and sub - optimal utilization of the available resources. If any of the quoted causes are reduced power could be saved to some extent. In circumstances where the transmission power can be diverse with the distance of the link, the link cost is higher for longer hops; the energy aware routing algorithms select a path with a huge number of small remoteness hop. It should find how it leads to an efficient choice between a path with huge number of short distance hops and another with a smaller number of large distance hops. Use of smallest amount energy paths for packet transmission may not always minimize the operational lifetime multi hop wireless network[16].

The Figure 2 described all the levels of cross layer system and how it's linking or integrated with others layers during the data transmission between the nodes.

Figure 2: Examples of dynamic adding of protocol layers



Multipath Routing

Traffic/Load balancing method it may be valuable for increasing network lifetime. It is create to be a capable responsibility technique for MANET. The use of backup paths may lead to decrease packet loss, makes communication sessions maximum duration and provides strengthens to mobility. And all these factors result in minimum energy utilization so there is a possible benefit that network lifetime can be extended. The common nature of radio medium may influence the execution of multipath techniques because paths need to be node and link disjoint so making it not easy compared to single path routing but multiple routes can be formed to distribute the data to send and receive with in a time period.

The interruption of each node is intended based on packet arrival time and packet broadcast time. The normal delay at node includes the queuing conflict and transmission delays [16]. Then full path delay is calculated by sum of node interruption from source to destination.

$$\text{Total Packet } T_P = \sum R_k (k=1 \dots n) \quad (1)$$

Where R_k is the node delay. In route discovery process, the Route Request packet carries hop count, and the total path delay T_p of a path P . On receiving the Route Request packet the destination node send Route Reply packet back. If the duplicate Route Request packet has a minimum total path delay and hop count than the previous one, the destination sends a Route Reply packet again to the source node to change the route immediately. Load Aware On-demand routing protocol is an extension of the AODV.

1) LAOR allows the intermediate nodes to relay duplicate Route Request packets if the new path (P') to the source of RREQ is shorter than the previous path (P) in hop count, and TP' is smaller than TP (i.e., $TP' < TP$).

2) Each node updates the route entry only when the newly acquired path (P') is shorter than the previous path (P) in hop count, and TP' is smaller than TP (i.e., $TP' < TP$).

Route discovery

Source node initiates a RREQ to the multicast address if the source has data to send to a multicast group and there exists no route. When the group leader or a member of the desired multicast group receives multiple RREQ packets, it selects the one with the highest sequence number and the lowest hop count and unicast a RREP to the requesting node.

The RREP packet contains the distance of the replying node from the group leader, power required to transmit from the replying node to its receiving node and the current sequence number of the multicast group. RREP packets update the power in the unicast routing table along that path. When the receiving node receives more than one RREP packet, it forwards all the RREP packets. Among the entire RREP packet, the packet which has the minimum energy required is selected. The path which requires minimum energy is selected at the source on the reception of RREP. This minimum energy path is used to transmit data so as to enhance the network life time and to reduce the energy consumption[20].

IV. PROPOSED ENERGY EFFICIENT MULTIPATH JEER:

A Proposed Multipath Power efficient JEER by modifying the obtainable AODV and DSR protocol. The changes are made in the route detection phase of AODV and DSR algorithm. The Route Reply

packet is drive to the particular source with the communication power in its header along with the route. Up on receiving the Route Reply packet, the source node measures the received power of the Route Reply packet and collects the transmit power of the Route Reply packet that is piggybacked in the same packet. Then the source node calculates the pathloss of the Route Reply packet and calculates its required minimum transmission power using the receiver threshold. The receiver threshold along with the path loss gives the optimum power required for transmission at MAC layer. This algorithm is proposed to prevent link break and increase the throughput in the overloaded network scenario.

Proposed Algorithm to establish the reduce link break routing

Step 1: Begin

Step 2: If (R is a RREQ packet = MEL) then

RREQ reaches neighbor nodes

Neighbor node will be Send RREP

Packet to the source node

Go to 3

Step 3: Update the destination routing table

MEL=1

Return

End if

Go to step 8

Step 4: If (R is RREQ packet = MaxEL) then

Other neighbor node will rebroadcast the

RREQ (i.e) rediscover the failure

RREP Packet

MEL = 0;

Go to step 3

Step 5: Source node it increase the TTL value by 1

MaxEL=MEL+1

Go to step 4

Step 6: if (Sequence number = MAX) &&
 (Broadcast Id = ID) then
 Broadcast the RREQ is rebroadcast
 packets by Source node.
 Update with the RREQ MEL,
 MaxEL
 End if
 Go to 5

Step 7: End

V.SIMULATION

In this paper the simulation are carried out based on the following NS-2 simulation setup environment

. Simulation Parameters	Value
Simulation period	15M
Speed	1
Terrain range	500x500
No. of nodes	150
Node placement	Random
Radio type	Radio accumulated noise
Mobility model	Gauss Markov
Pause time	600sec
Maximum speed	35 m/sec
Packet size	512 Bytes
Routing protocol	DSR, AODV,JEER

Application traffic	CBR
---------------------	-----

Table 1: Simulation Properties

THE USED PARAMETERS

These three parameters are:

- 1) Number of nodes per route.
- 2) Node mobility speed.
- 3) Node transmission range.

There are numbers of performance metric by which gives the performance of AODV .we here calculate packet delivery fraction, average end to end delay, normalized routing load and packet loss.

Gauss Markov Mobility Model:

The Gauss Markov Mobility model was originally used to suggest the group of nodes in a Personal Communication System (PCS). In this model, the level of random group of the nodes can be changed by using a tuning parameter. Each movable node is assigned a current speed and direction initially. At fixed time intervals, n , the speed and direction of each node is updated based on the $(n-1)^{st}$ instance using the equations –

$$S_n = \alpha S_{n-1} + (1 - \alpha)\bar{s} + \sqrt{(1 - \alpha^2)}s_{x_{n-1}}$$

$$d_n = \alpha d_{n-1} + (1 - \alpha)\bar{d} + \sqrt{(1 - \alpha^2)}d_{x_{n-1}}$$

Where,

- s_n and d_n are the new speed and direction of the MN at time interval n ;
- α , where $0 \leq \alpha \leq 1$, is the tuning parameter used to vary the randomness;
- s and d are constants representing the mean value of speed and direction as

$n \rightarrow \infty$; and $S_{x_{n-1}}$ and $d_{x_{n-1}}$ are random variables from a Gaussian distribution

1. Packet Delivery Fraction

It is the ratio of the total numbers of packets received by destination to the total number of packet send by the source. The better result is obtained by Enhanced AODV.

$$\text{PDF} = (\text{Received packets} / \text{sent packets}) * 100$$

2.Data packet delivery ratio

Total number of delivered data packets divided by total number of data packets transmitted by all nodes. This performance metric will give us an idea of how well the protocol is performing in terms of packet delivery at different speeds using different traffic models[17].

3.Normalized Protocol Overhead

Total number of routing packets divided by total number of delivered data packets. Here, we analyze the average number of routing packets required to deliver a single data packet. This metric gives an idea of the extra bandwidth consumed by overhead to deliver data traffic.

4.Throughput

Total number of delivered data packets divided by the total duration of simulation time. We analyze the throughput of the protocol in terms of number of messages delivered per one second.

5. Average End-to-End Delay: includes all possible delays caused by buffering during route discovery, queuing at the interface queue, retransmission delays at the MAC, propagation and transfer times[19].

VI.SIMULATION RESULTS

Figure 3: Packet delivery fraction of AODV and JEER

Figure 3 shows the Packet Delivery time with respect to number of nodes in cross layer based system provides high packet delivery ration compared with existing AODV protocol

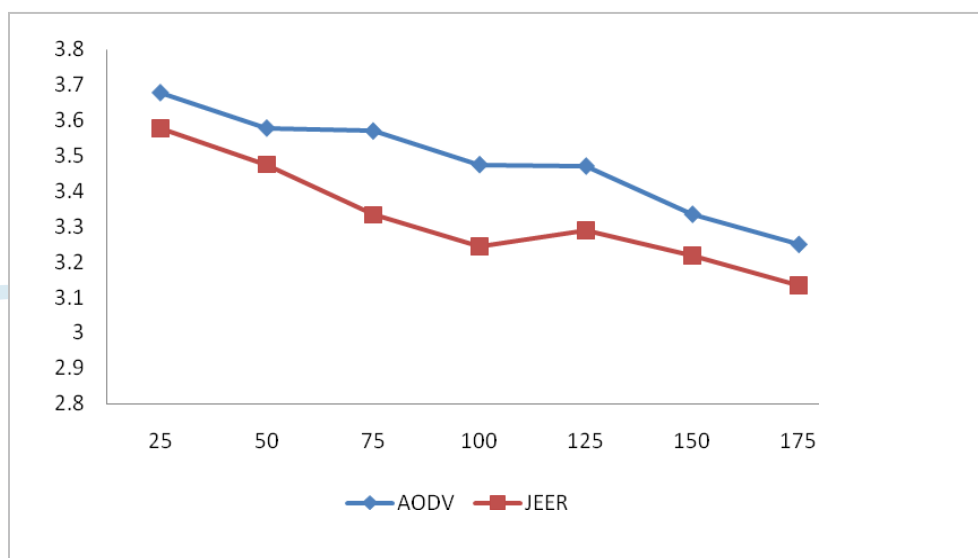


Figure 4 : Routing Overhead AODV and JEER

Figure 4 shows the Routing Overhead with respect to number of nodes in cross layer based Joint energy efficient multipath routing system reduced routing overhead compared with existing AODV routing protocol

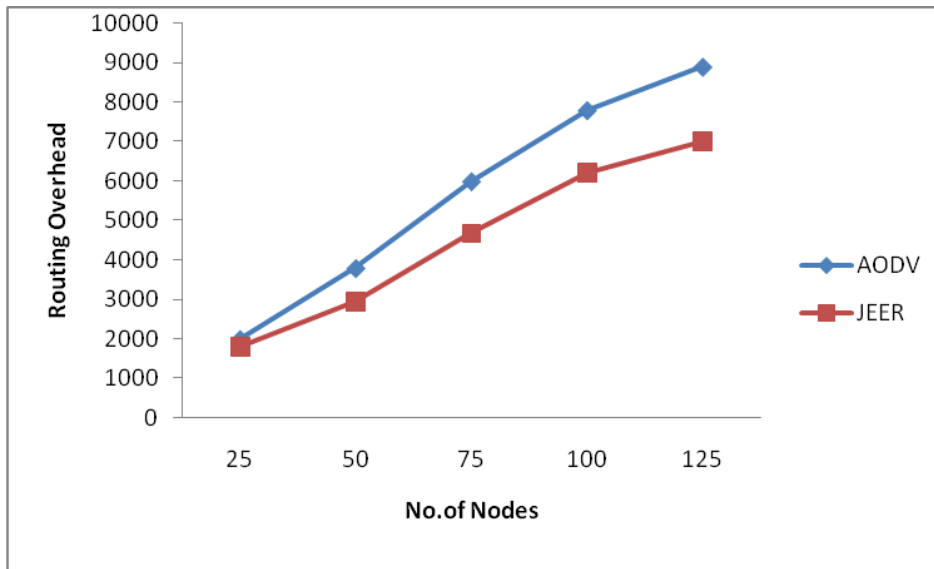


Fig 5: Throughput vs Traffic Load

Figure 5 shows the Throughput with respect to Traffic Load in cross layer based Joint energy efficient multipath system increased the throughput and reduced the traffic link break compared with existing AODV routing protocol

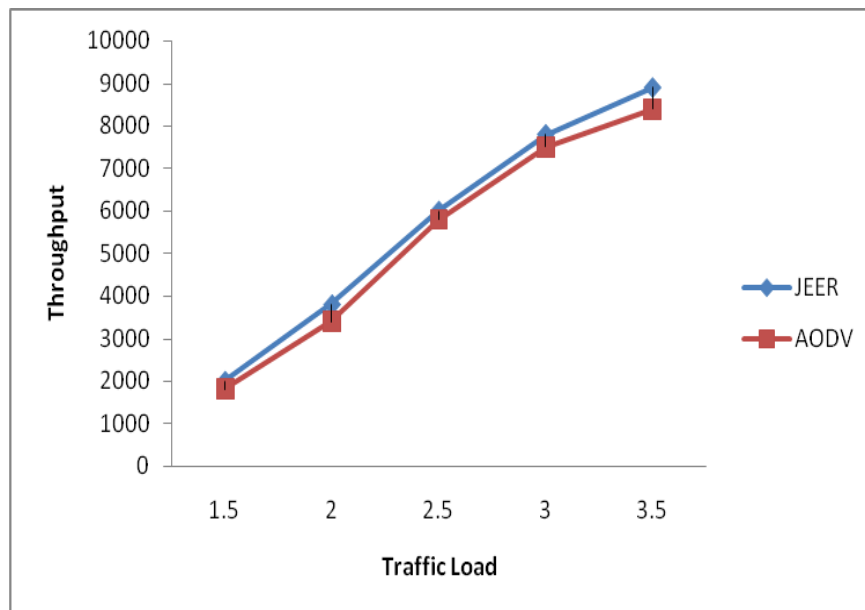
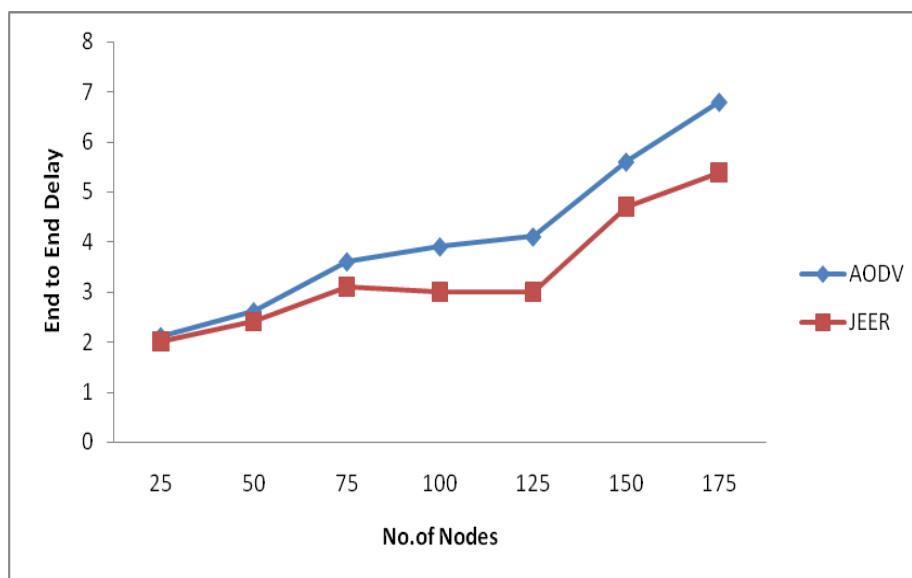


Fig 6: End to End Delay

Figure 6 shows the Delay with respect to number of nodes in cross layer based Joint energy efficient multipath system reduced end-to-end delay time compared with existing AODV routing protocol



VII. CONCLUSION

In this paper, Simulation results show that cross-layer based routing system design yield considerably improved performance by exploiting the tight coupling between the layers in wireless systems. A disseminated algorithm for joint power control and routing along with cross layer communications in wireless ad-hoc networks had been developed and tested. The performance study shows that there is better progress in this algorithm compared to existing algorithm. The successful sending of Route Request messages are significant in on demand routing protocols for MANET. The breakdown of Route Request causes serious problem in routing protocol. If Route request packet is failed, route re-discovery

procedure attempts will be exhausted and adds additional control overhead. Once again the source node reinitiates the Route Request message, increasing the flooding process. To look up the performance, it is very important to balance the load. Load balancing is used to increase throughput of the network. Also it is possible to maximize nodes lifetime, packet delivery ratio, end-to-end packet delay can be minimized, and network energy consumption can be probably balanced. The proposed system achieves the significant results compared to existing AODV and DSR protocols; it decreases the routing overhead, link break and end to end delay.

VIII. REFERENCES

- [1] Nadilma Cintra Valença Nunes Pereira and Renato Mariz de Moraes , “ A Comparative Analysis of AODV Route Recovery Mechanisms in Wireless Ad Hoc Networks” IEEE transaction 10-11 September 2009
- [2] Seyed Amin Hosseini Seno, Rahmat Budiarto, Tat-Chee Wan ,A Routing Layer-based Hierarchical Service Advertisement and discovery for MANETs, Adhoc Networks 9355-367, (2011).
- [3] Kanojia Sindhuben Babulal, Distance link cost link error based energy Efficient cross layer reliable routing for wireless Sensor network, ISSN 2150- 7988 IJCISIMA Vol 5 (2013) pp. 437-444
- [4] M. Razzaque, S. Dobson, and P. Nixon, “Cross-layer architectures for autonomic communications,” Journal of Network and Systems Management, vol. 15, no. 1, pp. 13–27, March 2007.
- [5] Marina, M.K. and S.R. Das, 2002. Ad hoc on-demand multipath distance vector routing. ACM SIGMOBILE Mobile Comput. Commun. Rev., 6: 92-93. DOI: 10.1145/581291.581305

- [6] Perkins, C., E. Belding-Royer and S. Das, 2003. Ad hoc On-Demand Distance Vector (AODV) Routing. RFC
- [7] Tamilarasan, S.M. and K. Eswariah, 2012. Energy aware and delay based ad hoc on-demand multipath distance vector routing in MANETs. Eur. J. Sci. Res., 85: 452-459.
- [8] Christine Yick J, Mukherjee B, Ghosal D. Wireless sensor network Survey, Computer Networks, vol 52, no.12,2008
- [9] W.Ye,J.Heidermann, and D.Estrin, (2002) An energy efficient MAC protocol for wireless sensor networks, in Proceeding of IEEE Infocom, USC/Information Sciences Institute. NewYork, USA; IEEE, pp. 1567-1576. [Online]. Available: <http://www.isi.edu/johnh/PAPERS/Ye02a.html>.
- [10] S.Singh and C.S.Raghavendra, (1998) PAMAS: Power Aware Multi-access Protocol with Signaling for Ad hoc networks, ACM Computer Communication review, vol.28, no.3, pp.5-26.
- [11] Wendi Heinzelman, Anantha Chandrakasan, and Hari Balakrishnan, (2000) Energy Efficient Communication Protocol for Wireless Microsensor Networks, Proceeding of the Hawaii International Conference on System Sciences, 4-7.
- [12] David B. Johnson, David A. Maltz, Yih-chun Hu, and Joreta G. Jetcheva, (2000) The Symanic source for mobile Ad hoc Wireless Networks, IETF Internet draft.
- [13] Charles E.Perkins, and Elizabeth M.Royer, (2003) Ad hoc On Demand Distance Vector Routing, IETF Internet draft, <http://www.ietf.org/internetdrifts/draft-ietf-manet-aodv-13.txt>

- [14] Bansal and Z.Liu, (2003) "Capacity, delay and mobility in wireless ad hoc networks," in Proceeding of the 22nd Annual Joint Conference of the IEEE Computer and Communications Societies (INFOCOM '03), vol.2,pp.1533-1563, San Francisco, California, USA.
- [15] S.Toumpis and A.J.Goldsmith, (2004) "Large wireless networks under fading, mobility, and delay constraints," in Proceeding of the 22nd Annual Joint Conference of the IEEE Computer and Communications Societies (INFOCOM '04), vol. 1, pp.609-619, Hong Kong.
- [16] J-H. Song, V. Wong, and V. Leung, "Load Aware On-Demand routing (LAOR) Protocol for Mobile Adhoc Networks," in Proceedings of IEEE Vehicular Technology Conference (VTC Spring), Jeju, Korea, April 2003
- [17] S. R. Das, C. E. Perkins, E. M. Royer and M. K. Marina, "Performance Comparison of Two On-demand Routing Protocols for Ad Hoc Networks," in IEEE Personal Communications Magazine, special issue on Mobile Ad Hoc Networks, Vol. 8, No. 1, pp. 16-29, Feb 2001.
- [18] An Enhanced Distributed Weighted Clustering Routing Protocol for Key Management K. Gomathi and B. Parvathavarthini. Indian Journal of Science and Technology, Vol 8(4), 342–348, February 2015.
- [19] Analyzing Routing Protocol Performance with NCTUns for Vehicular Networks Eric Gamess and Moises Chachati. Indian Journal of Science and Technology, Vol 7(9), 1391–1402, September 2014.
- [20] Energy reduction aware multicast routing for mobile ad hoc networks. P. Latha and R. Ramachandran. Indian Journal of Science and Technology Vol. 3 No. 3 (Mar 2010) 305- 307.